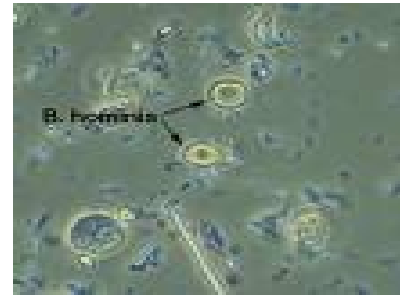
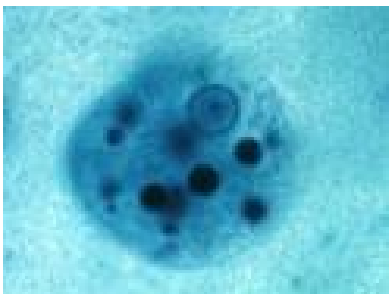


**Annexe I**

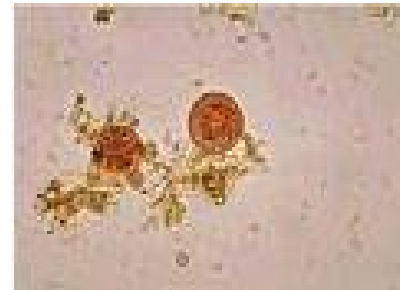
**Les rhizopodes (Amibes) :**



*1.d :Blastocystis hominis*



*1.a : Entamoeba histolytica*



*1.e :Endolimax nanus*



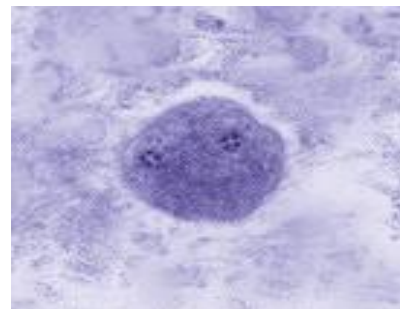
*1.b :Entamoeba hartmani*



*1.f :Pseudolimax butchlii*



*1.c :Entamoeba coli*

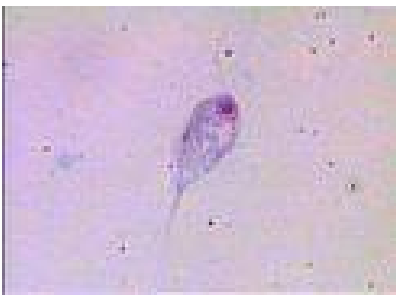


*1.g :Dientamoeba fragilis*

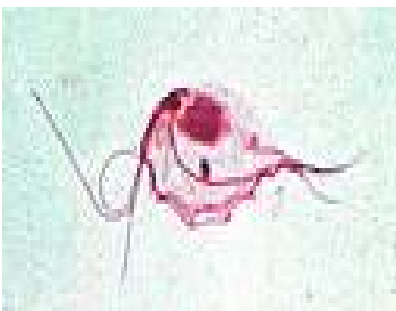
**Les flagellés :**



2.a : *Giardia intestinalis*



2.b : *Chilomastix mesnili*



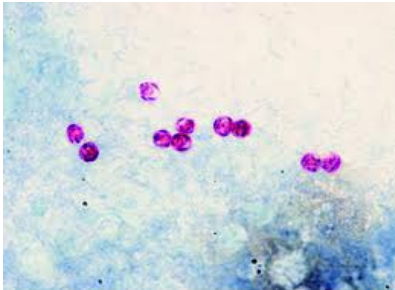
2.c : *Trichomonas intestinalis*

**Les ciliés :**

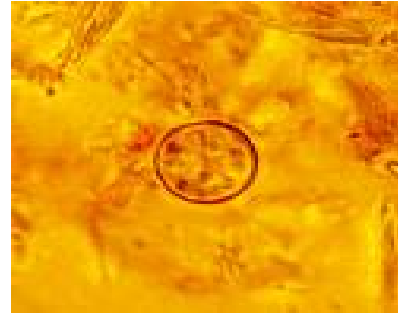


3.a : *Balantidium coli*

**Les sporozoaires :**



4. a : *Cryptosporidium* sp.



4.d : *Cyclospora* sp.

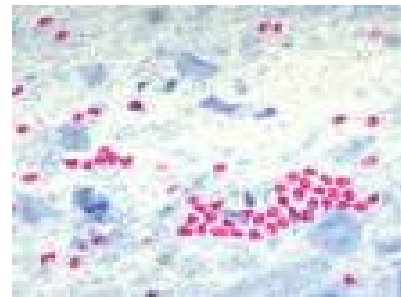


4. b : *Isospora belli*



4.c : *Sarcocystis hominis*

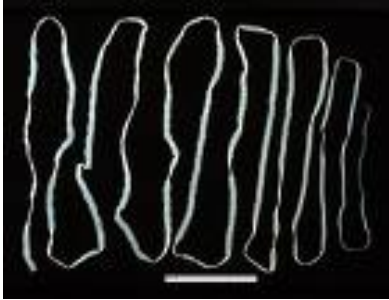
**Microsporidies :**



5. Microsporidies

**Annexe II**

**Les métazoaires :**



1.a : *Taenia saginata*



1.b: *Taenia solium*



1.c: *Hymenolepis nana*



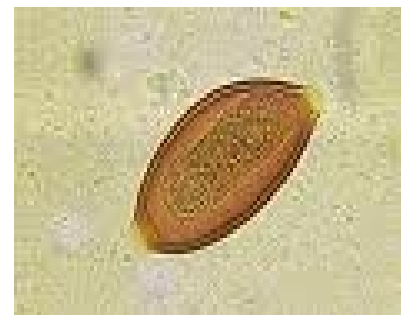
2.a: *Fasciola hepatica* (œuf)



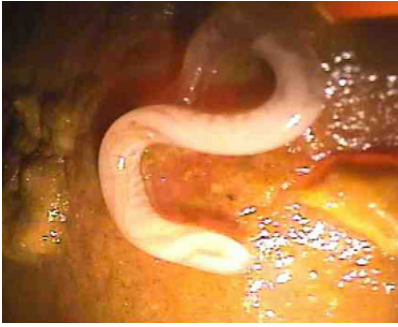
3.a : *Schistosoma mansoni*



4.a : *Enterobius vermicularis*



4.b : *Ascaris lombricoïdes* (œuf)



4.c :*Trichuris trichiura*



5.a :*Ancylostoma duodenale*



5.b :*Strongyloides stercoralis*